







For more than 25 years we produce Mediterranean Species and trade the best quality of fresh fish from open-sea fishing to our customers in Cyprus and abroad by offering reliability and consistency in our service.



Blue Island

The main business of the company is the *fish farming of Mediterranean* species, Sea Bass and Sea Bream, and the *trading of fresh fish* from open sea fishing.



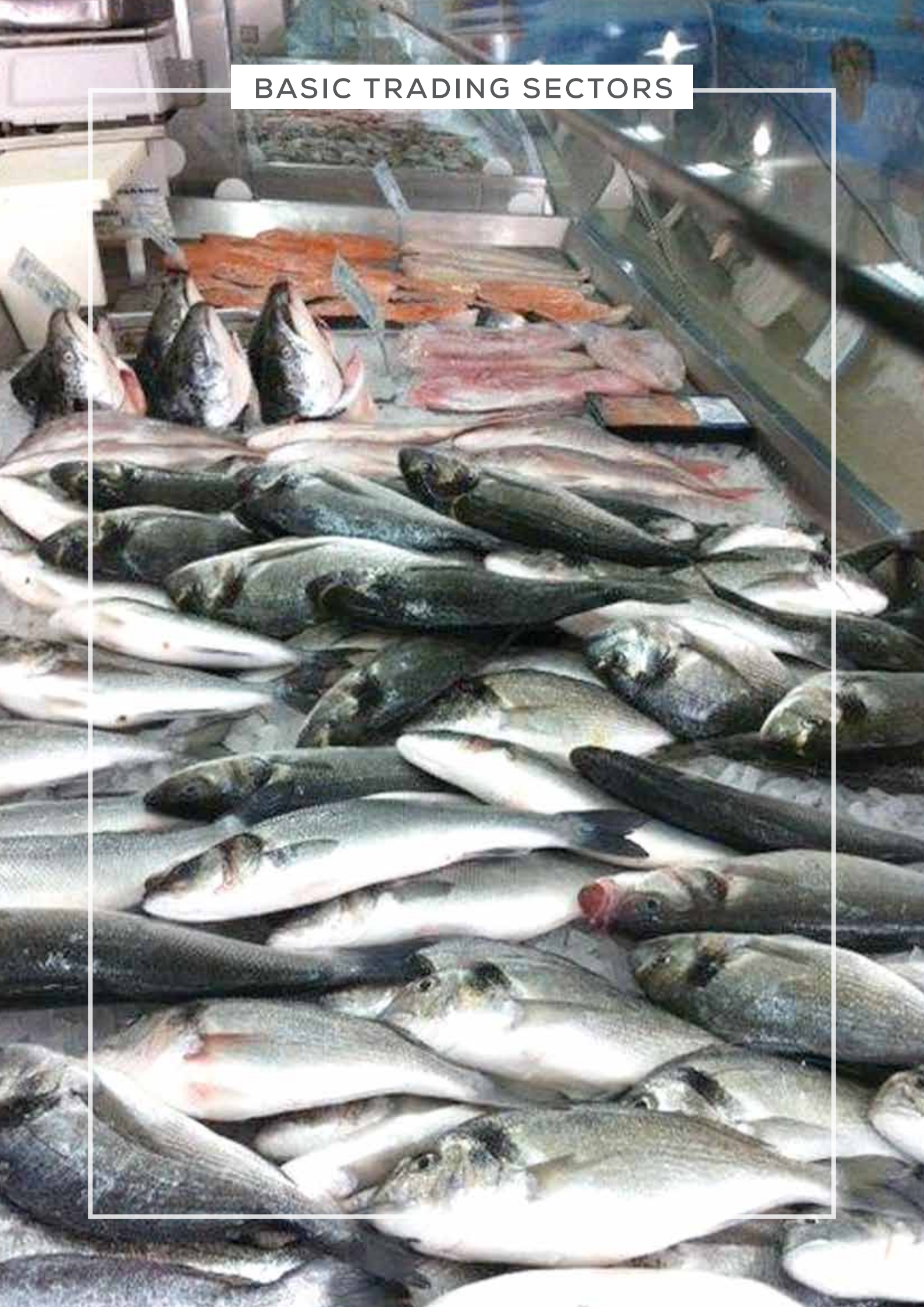
Blue Island was established in 1993 (under the name Blue Island Fish Farming Ltd) as a mariculture unit. A turning point for the company has been its conversion in 1999 into a Public Company and its listing in the Cyprus Stock Exchange. This development contributed to the growth of the company both in the field of mariculture and in the field of fresh fish trading.

Today the company distinguishes itself in the Cyprus market in the fields of mariculture and fish trading. Both the structure and the infrastructure of the company are continuously developing, with a view to offering a reliable and complete service to its clients, both in Cyprus and abroad.

Main Fields of Activities:

- Fish farming through our fish breeding farm at Governor's Beach.
- Fry breeding, through our subsidiary, Blue Fisheries in the Akrotiri area.
- Whole selling in Cyprus and abroad through our Processing / Packing Unit / Warehouses at the Strovolos Industrial Estate.
- Retail selling through our own shops and shops in supermarket chains.

BASIC TRADING SECTORS





Wholesale Sector:

- Supply of products to other fish markets and Seafood shops throughout Cyprus.
- Supply of fish to hotels & restaurants throughout the island.

Retail Sector:

- Sales through our own network of fish markets and shops in supermarket chains in all the cities of the island.

Exports Sector:

- Fish exports from our own breeding farm (mainly sea bass and sea bream) and other Mediterranean fish such as tuna and sword fish caught by Cypriot vessels, to European countries, the United States, Russia and the Middle East.

Sale of Fry Sector:

- Through our subsidiary Blue Fisheries Ltd to fish farms in Cyprus and abroad.

VISION AND MISSION





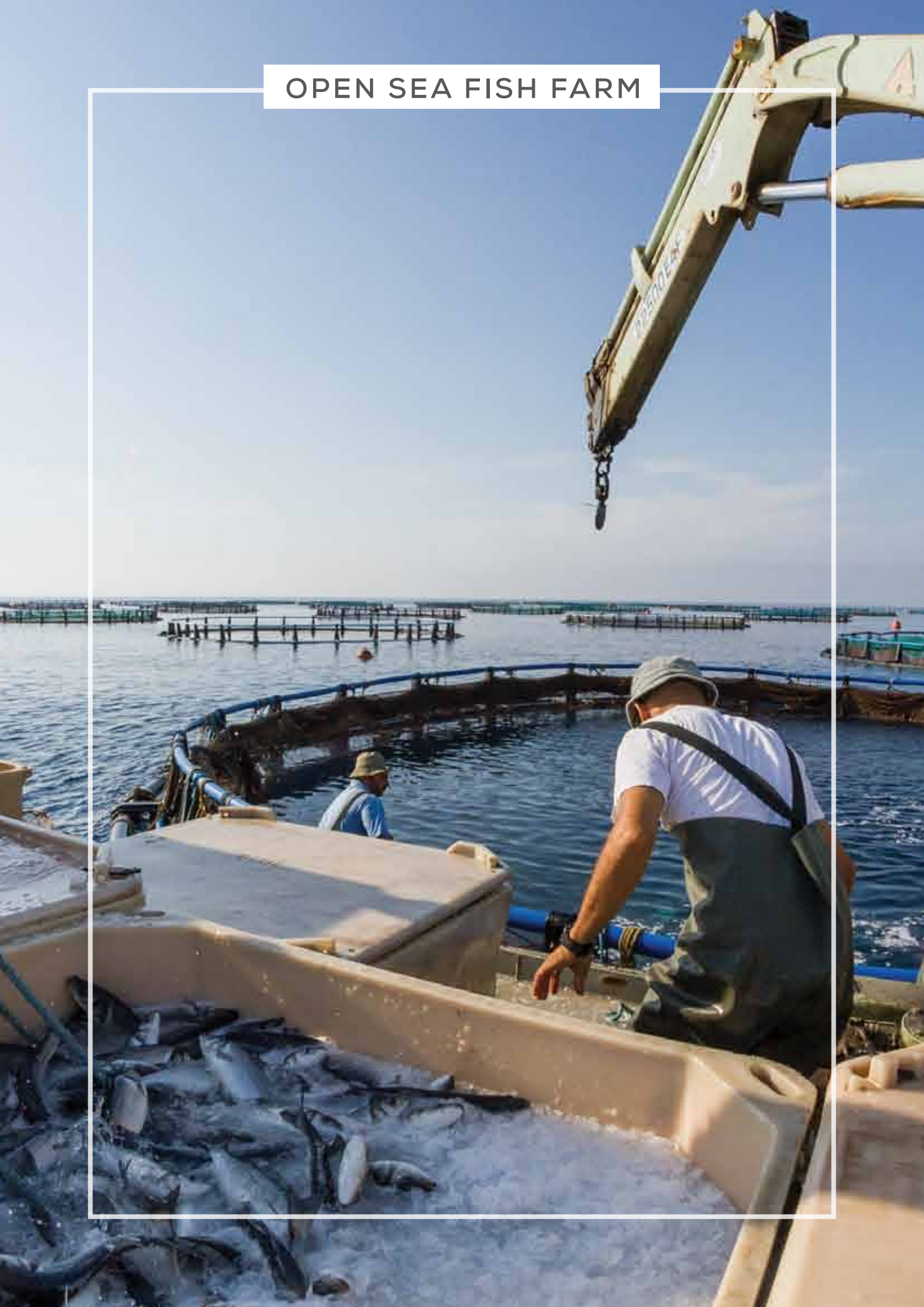
Our vision is the *continuous growth* of our company as regards to the supply of products which will satisfy absolutely *our customers* in respect of *quality, competitive prices and reliability of our services*, for the benefit of *our shareholders, stakeholders and the society*.



We want to ensure the *long-term viability* of the company, by maintaining its *good name and reputation*, and winning the *recognition of our customers* as one of the best *reliable supplier*.

Our business activities always *respect* the shareholders, stakeholders, the society and the environment.

OPEN SEA FISH FARM



Privileged Location

The open sea fish farm of the company is located at Dolos Cape at the Governor's Beach area (34° 41' 742 B / 33° 16' 253A, 34° 41' 745 B / 33° 16' 010 A, 34° 41' 939 B / 33° 16' 299 A, 34° 41' 944 B/33° 16' 041 A) 1 km from the nearest beach, at a depth of 30-60 m.

The fish farm is supported by modern vessels which moor at the Archirodon port, where the company has its own coastal mooring installations and land installations at Tochni, near Zygi.



Capacity

The fish farm has the capacity and the license to produce around 1800 tons of fish a year. It is staffed by well-trained personnel and has state-of-the-art equipment. As the aim of the company is to increase the productivity of its operations and improve safety standards both for its staff and the fish population, it always chooses equipment of the highest quality.



OPEN SEA FISH FARM



Superior Quality

The fish fry (2-3gr), after delivered from our hatchery, grow in a natural environment of clear waters and strong southeastern and southwestern currents, almost throughout the year. The position of the fish farm is truly privileged. There is high oxygenation, which contributes to the good health of fish. The location of the fish farm in combination with the good management practices followed results in the production of healthy fish in the fish farm, which do not need vaccines, antibiotics, hormones or any other medicine.

The fish produced by Blue Island Plc, in addition to their natural appearance, have a wonderful taste due to good metabolism they have as a result of the above mentioned factors and also of the feed used (dry food in small pellets consisting of natural ingredients, fishmeal and cereals enriched with vitamins and minerals). The feed used is 100% free from products or by-products of animal origin.



Good Management Production Practices

Fish grow under closely monitored sea conditions, in low stocking density in the fish cages (floaters with nets) and when they are harvested are placed in ice-water for immediate death. Subsequently they are taken to our packing unit where they are packed and reach consumers, always fresh, nourishing, healthy and safe to eat.



FISH HATCHERY - BLUE FISHERIES LTD





Blue Fisheries Ltd is the subsidiary company of Blue Island Plc.

The fish hatchery is located in the Akrotiri area, Limassol (34°38' 14.20° N, 32° 54' 42.85° E). The annual production capacity of the hatchery is 10 million fries (small fish) weighing 1,8 - 3,0 gr, which are delivered to fish farms for breeding until they reach the commercial weight (more than 300 gr each fish).



Larvae and fries grow in an absolutely *healthy* and *natural environment*. Antibiotics and hormones are not used in the production processes.



It is worth mentioning that the hatchery is one of the first established in the Mediterranean for the production of Mediterranean fish, mainly *Sea Bass* and *Sea Bream*.

Blue Fisheries Ltd can supply all year around, the following products:

Sea Bream Fry (Sparus Aurata)

Distributed almost throughout the year with weight varying from 2 - 3 grams.

Sea Bass Fry (Dicentrarchus Labrax)

Distributed from March until August at an average weight of 2 - 3 grams.

WHOLESALE SECTOR



Processing / Packing Unit / Warehouses:



The Fish Processing/Packing Unit and the Warehouses are located at the Strovolos Industrial Estate. The facilities handle today about 4,000-5,000 tons of fish a year.

All kinds of fish (see relevant section) are handled by the packing unit. Following grading, the packing and in some cases of certain kinds of fish, filleting, marinating and even deep freezing are processed. Immediately after, the packed fish are dispatched to customers in Cyprus and abroad.

The company's facilities are in line with [European Laws](#) and have the [European compliance Approval CYF07](#).



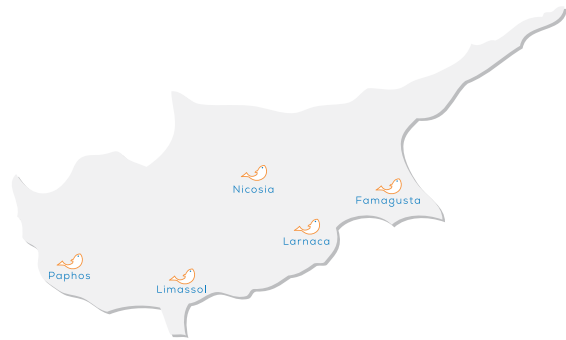
[Health Certificate](#) issued by the Department of Veterinary Services of the Ministry of Agriculture, Natural Resources and Environment of Cyprus certifying that [no antibiotics are utilized during the fish rearing process](#).

RETAIL SECTOR



Blue Island Retail Shops

The presence of Blue Island Plc in the retail sector in the Cyprus market is quite significant.



The company owns more than 10 fish markets throughout Cyprus, a significant number of shops in supermarket chains and exclusive supply agreements with supermarkets and other fish shops all over the island. Our presence accomplishes and secures the leadership of the company in the retail sector in Cyprus.

In addition to the modern design of the shops, Blue Island Plc fish markets ensure both the hygienic preservation and display of products as well as the easy and quick service of the customers.

SEA AQUACULTURE PRODUCTS





Advantages of Blue Island Products:

- Mediterranean supreme quality species
- Naturally healthy fish
- Fed with high quality standardized dry feed
- Natural appearance and texture
- Always fresh. The fish is harvested on customer demand.
- Fully traceable production and supply chain
- Carefully selected healthy and strong juveniles (2-3gr fish)
- Raised in our fattening unit in open sea
- More than 20 years of Experience in Exports
- Professionalism

DOMESTIC PRODUCTS





The company is supplied from its own production and from fishermen and fish supply companies in Cyprus, the Mediterranean and other countries the following fresh fishery products:

- Sea Bass, Sea Bream and Meagre from its own mariculture sea fattening unit.
- Fish from coastal and open sea fishing such as Red Mullet, Bogue, Whitebait, Sardines, Anchovy, Striped Bream, White Grouper, Cod Fish, Alalunga Tuna, Blue Fin Tuna, Yellow Fin Tuna, Swordfish.
- Octopus, Squid and Cuttlefish
- Prawns, Crabs and Scampi
- Lobsters, Mussels, Oysters, Clams, Cockles (alive)
- Salmon, Trout, Perch.



EXPORT PRODUCTS



Blue Island



Sea Bream
(*Sparus Aurata*)

- Fresh Whole Sea Bream / Gutted / Gutted and Descaled
- Frozen Whole Sea Bream / Gutted / Gutted and Descaled



Sea Bass
(*Dicentrarchus Labrax*)

- Fresh Whole Sea Bass / Gutted / Gutted and Descaled
- Frozen Whole Sea Bass / Gutted / Gutted and Descaled



Meagre
(*Argyromus Regius*)

- Fresh Whole Meagre / Gutted / Gutted and Descaled
- Frozen Whole Meagre / Gutted / Gutted and Descaled

CONTACT US





Head Offices

10 Polyfimou street
Strovolos Industrial Area
2033 Strovolos
P.O.Box 26073, 1666 Nicosia, Cyprus
Tel: +357 22 516555
Fax: +357 22 518044
Email: info@blue-island.com.cy
Website: www.blue-island.com



An underwater photograph showing sunlight rays (crepuscular rays) filtering through the water from the surface. The water is a deep blue, and the light rays create a dramatic, ethereal effect. The surface of the water is visible at the top, with some ripples and reflections of light.

www.blue-island.com